





# CERTIFICATE OF LOCATION OF GOVERNMENT CORNER

County of Anoka

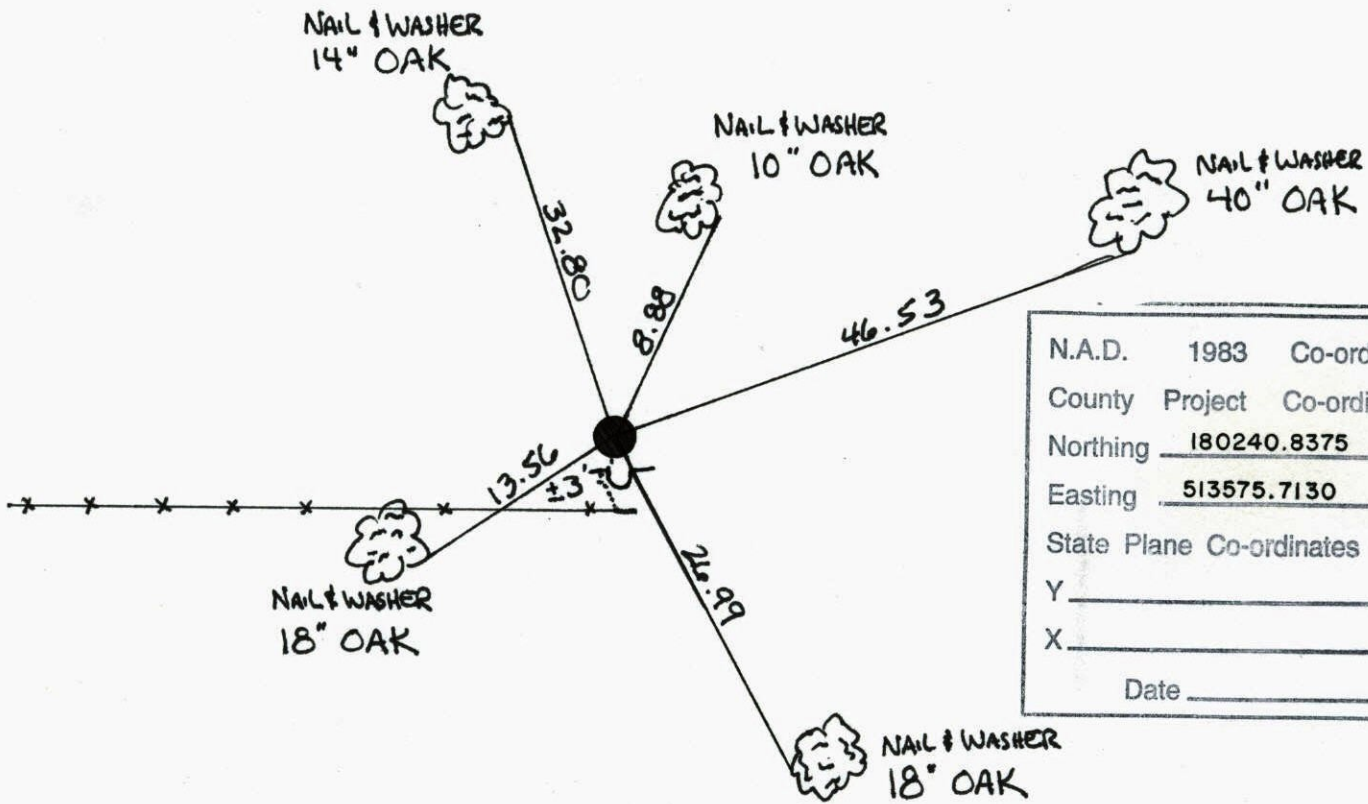
State of Minnesota

South QTR. Corner of Sec. 16 Township 32 Range 23

I hereby certify that on the 6 day of JUNE, 19 60, I found the described corner which was evidenced by CONCRETE MONUMENT

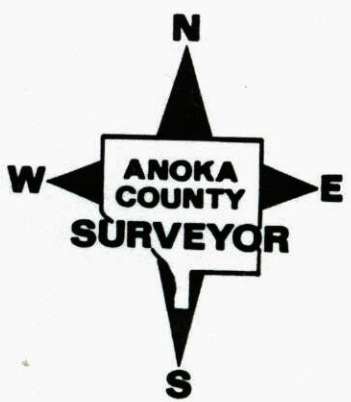
and I further certify that to perpetuate the location of said corner, I did, at the exact location thereof, place a permanent marker consisting of CAST IRON  
SIGN AND POST ON SOUTH SIDE

which reference or witness monuments are located in the manner following:



N.A.D.	1983	Co-ordinates
County	Project	Co-ordinates
Northing	<u>180240.8375</u>	
Easting	<u>513575.7130</u>	
State Plane Co-ordinates		
Y	_____	
X	_____	
Date	_____	

Revised date	Revised date	Revised date
<u>5-28-93</u>		
<u>9-5-96</u>		
<u>2-5-02</u>		





## SOUTH 1/4 CORNER SECTION 16 T33 R23

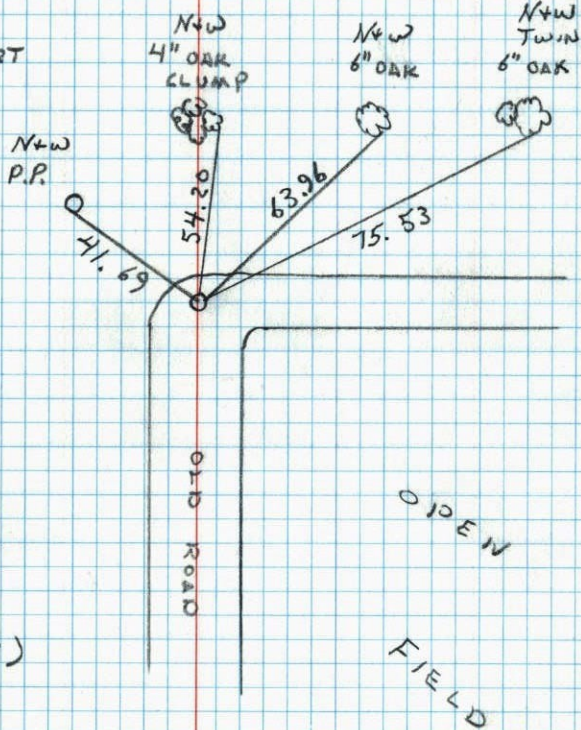
RETIED CAST IRON MONUMENT C.I. DOWN

1.5' ±



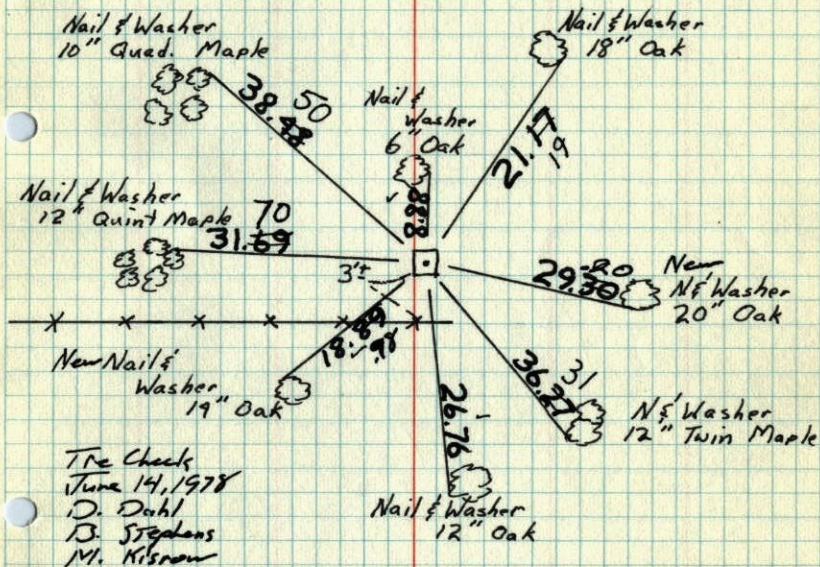
3-9-92

OAK WOODS

W. LARSON  
R. KLEMM  
M. STEWART

## S 1/4 Cor. Sec 16 - T32 - R23

Concrete Monument up .3'  
 Replaced Con. Mon. With Cast Iron Mon. flush  
 Sign post and warning sign 1' North Tie Check  
 June 6, 1960 June 19, 1975 June 7, 1971  
 D. Dahl R. Brien  
 Bill Rogers B. Sannerud J. Boetteher  
 Ralph Robinson G. Adams D. Venses



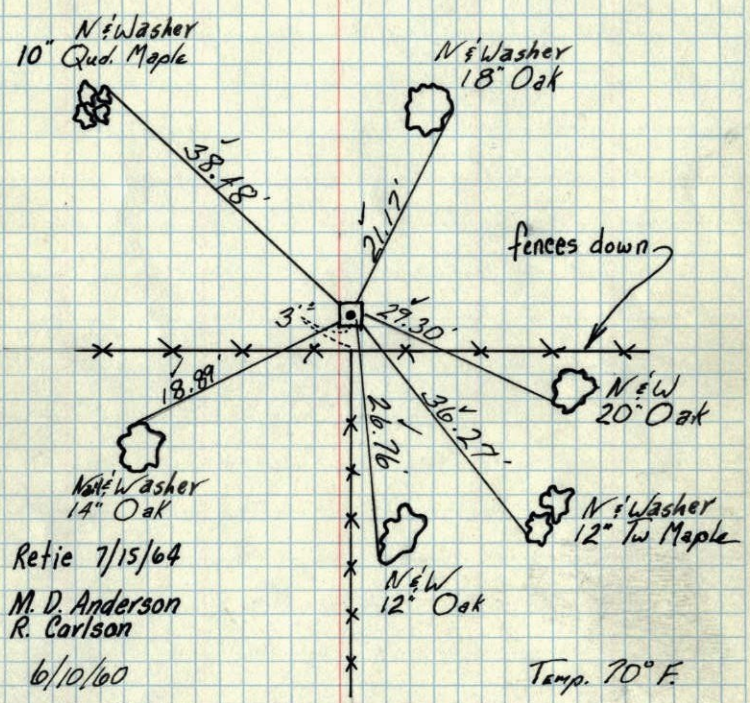
TEMPERATURE CORRECTED  
 AND HORIZONTALLY  
 TAPED MEASUREMENTS

ROLAND W. ANDERSON  
 COUNTY SURVEYOR  
 ANOKA COUNTY, MINNESOTA



S 1/4 Cor. Sec. 16 T. 32 R. 23  
Con. Mon. Up. .3'

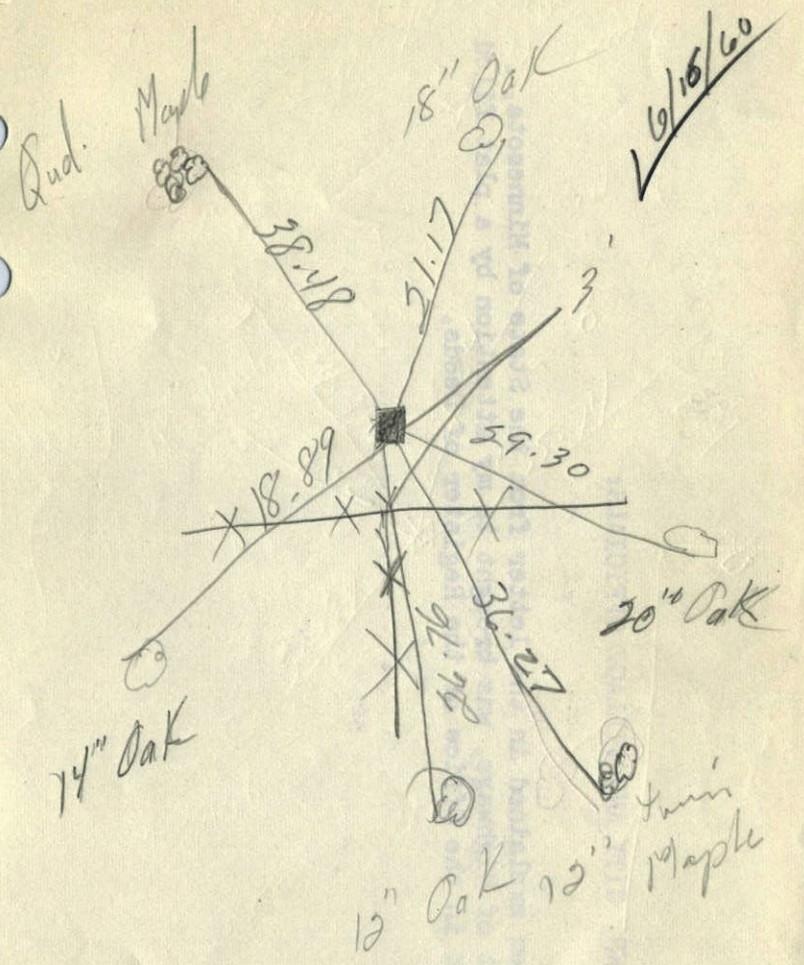
TEMPERATURE CORRECTED  
AND HORIZONTALLY  
TAPED MEASUREMENTS



Retie 7/15/64  
M. D. Anderson  
R. Carlson  
6/10/60  
Bill Rogers  
Ralph Robinson

ROLAND W. ANDERSON  
COUNTY SURVEYOR  
ANOKA COUNTY, MINNESOTA

6/10/60 S 1/4 Cor. Sec. 16 T. 32 R. 23  
Con Mon Up. .3'



Temp. 70°  
Bill & Ralph



S 1/4 Sec. 16 T 32 R 23

14

Cont. Mon. up 0.3'

